

INSTALLATION INSTRUCTIONS:

1. FROM VERTICAL TANGENT OF PULLEY MEASURE AROUND 10.25" (A)
2. FROM SURFACE OF BELT MEASURE OUT 3.5"  
Z RADIUS = PULLEY RADIUS + 3.5"
3. WHERE A & Z INTERSECT IS THE CENTER OF THE PIPE LOCATION
4. CUT TWO (2) HOLES 2.5" DIA ONE (1) EACH SIDE OF CHUTE
5. DISASSEMBLE THE SCRAPER BY LOOSENING THE BOLTS  
JUST ENOUGH TO ALLOW THE PIPES TO BE REMOVED
6. EXTRACT THE SHEAR PIN ON THE TENSIONER TO ALLOW  
REMOVAL OF OTHER PARTS
7. CENTER BEARING [ RED DONUT ] ON OPPOSITE ACCESS SIDE OVER HOLE
8. CENTER TENSIONER ASSEMBLY ON THE ACCESS SIDE OVER HOLE

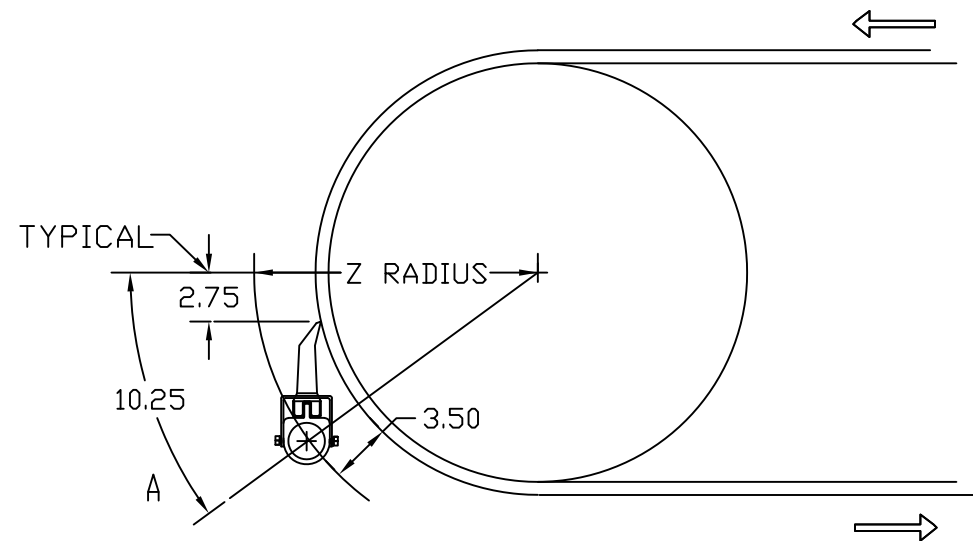
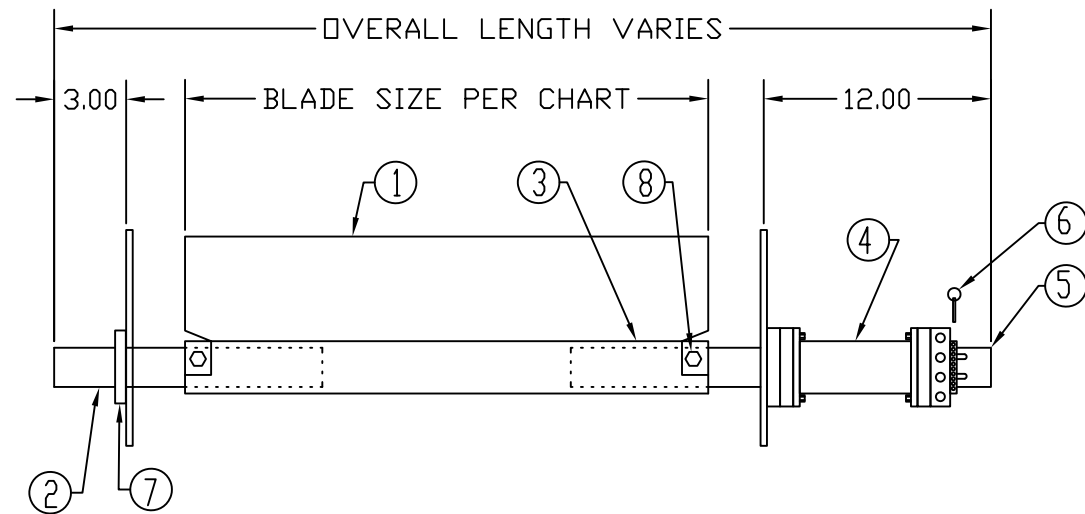
WELD IN 4 PLACES - 1" LONG FILLET WELDS AROUND THE WELD RINGS

9. INSTALL PIPES THROUGH HOLES AND INSERT INTO THE MAIN FRAME
10. TIGHTEN THE BOLTS ON THE MAIN FRAME
11. THE BLADE ASSEMBLY SHOULD PIVOT FREELY BETWEEN THE BEARINGS

FINAL ADJUSTMENT

1. PUSH THE CLEANING EDGE AGAINST THE FACE OF THE BELT
2. DETERMINE WHICH HOLE ALIGNS WITH THE TENSIONER HUB AND THE PIPE
3. USE THE TENSIONING TOOL AND INSERT IN THE LARGE HOLES IN THE HUB
4. TWIST THE HUB AWAY FROM PULLEY TWO (2) HOLES AND INSERT SHEAR PIN
5. HIDE THE TENSIONING TOOL TO AVOID UNAUTHORIZED ADJUSTMENTS
6. THIS SETTING OF THE CLEANER SHOULD BE THE LAST  
TILL THE BLADE IS WORN OUT AND NEEDS TO BE REPLACED

THE BELT CLEANER SHOULD BE CHECKED ON A MONTHLY BASIS



NOTE:

PRIMARY CLEANER CAN BE INSTALLED ANYWHERE ALONG THE "Z" RADIUS AS LONG AS MATERIAL DOES NOT FALL ONTO THE MAIN FRAME.

MODEL #	BELT WIDTH	FRAME LGTH.	BLADE COVER
BCP-18	18	16	16
BCP-24	24	22	22
BCP-30	30	30	28
BCP-36	36	34	34
BCP-42	42	40	40
BCP-48	48	46	46
BCP-54	54	52	52
BCP-60	60	58	58
BCP-72	72	70	70
BCP-84	84	82	82

ITEM	QTY.	DESCRIPTION
1	1	BLADE
2	1	OPPOSITE SIDE SUPPORT PIPE
3	1	MAINFRAME ASSEMBLY
4	1	TENSIONER
5	1	TENSIONER SIDE SUPPORT PIPE
6	1	SHEAR PIN
7	1	WELD COLLAR [RED]
8	2	LOCKING BRACKET
		TENNSIONING TOOL NOT SHOWN